

PP2 Cà Foscari – Dept. Of Management

[WP 3.1 – ATT5]

Railway stations **ACCESSIBILITY ANALISYS** **TRIESTE – LJUBLJANA** railway line

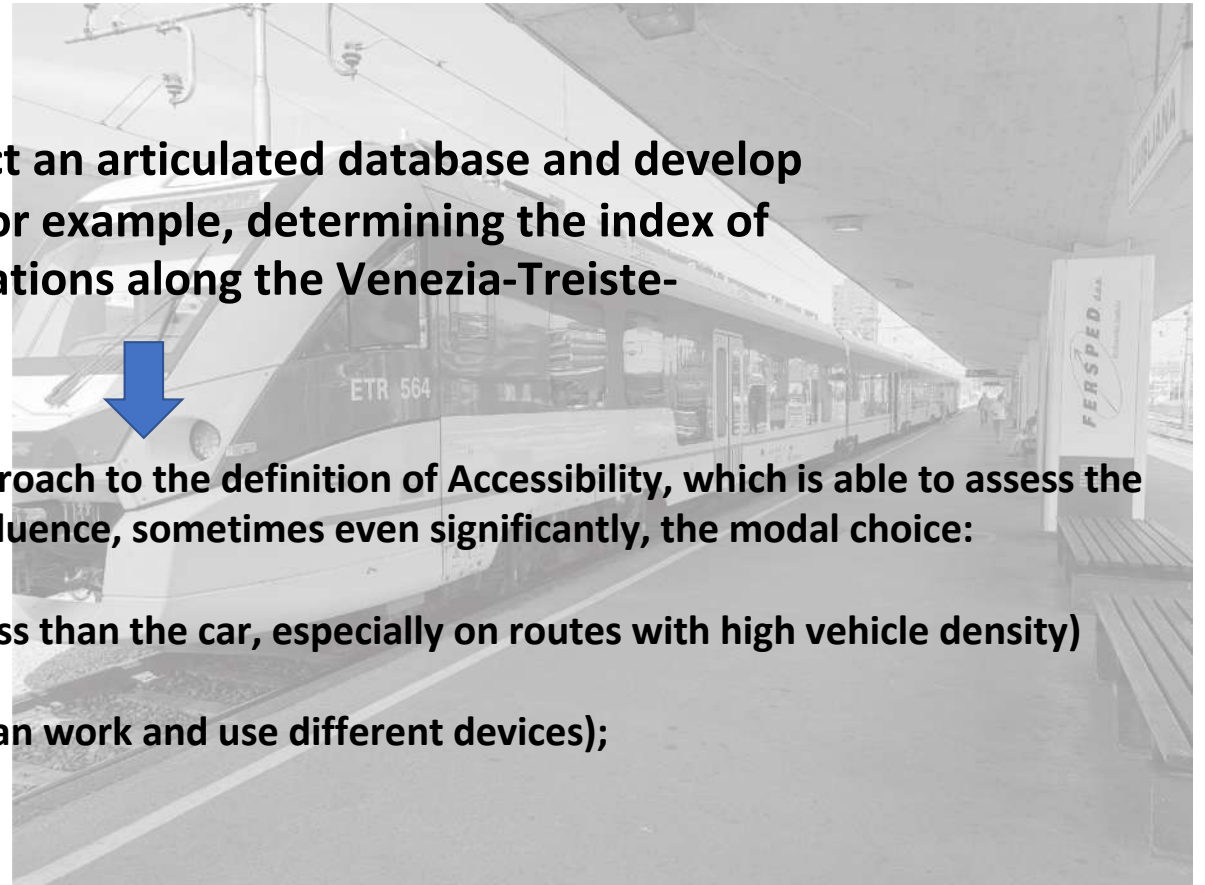
Marco Fasan

Why do we need to collect an articulated database and develop analytical tools such as, for example, determining the index of accessibility to railway stations along the Venezia-Treiste-Ljubljana line?



We are developing a new analytical approach to the definition of Accessibility, which is able to assess the weight of endogenous variables that influence, sometimes even significantly, the modal choice:

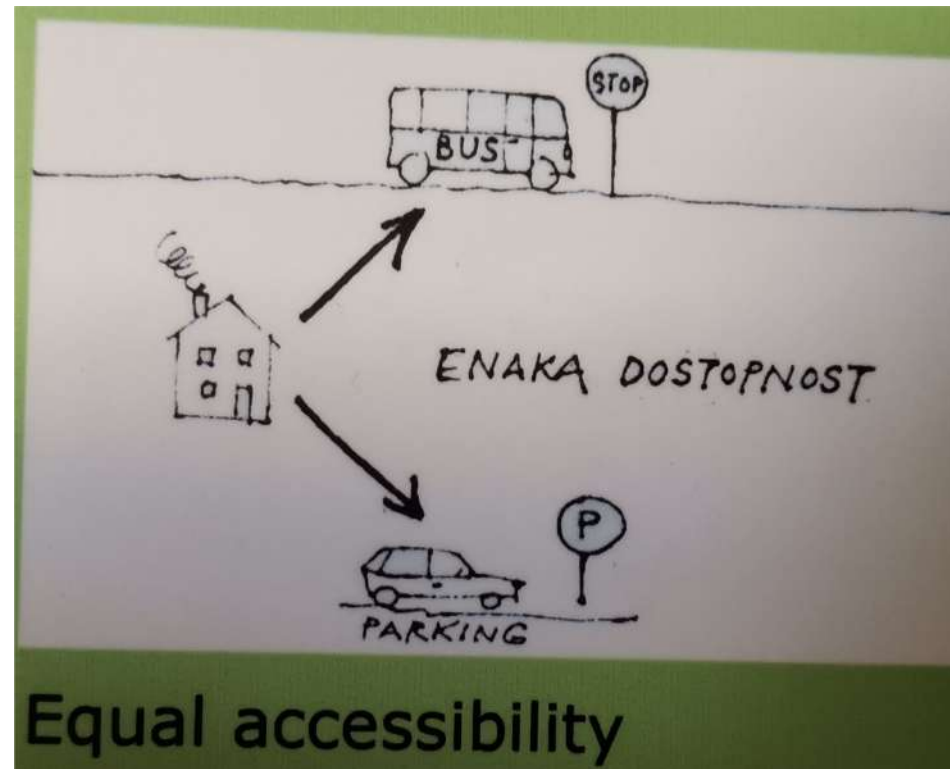
- **comfort (the train generates less stress than the car, especially on routes with high vehicle density)**
- **Perceived and real security;**
- **Perception of time (in the train you can work and use different devices);**
- **.....**



•
•
•

Accessibility analysis Ljubljana-Trieste railway line

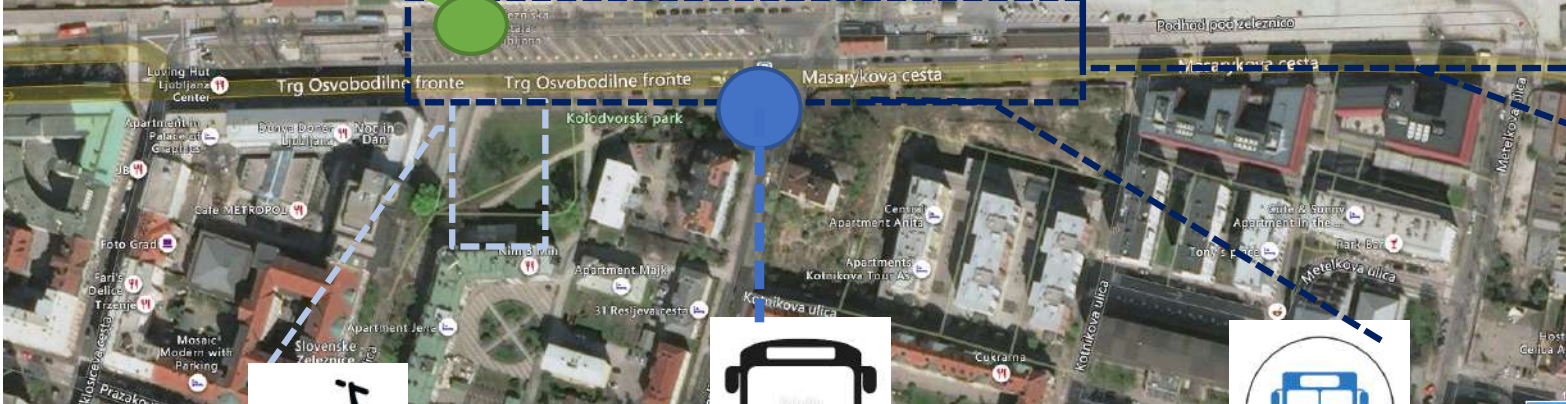
•
•



Stazione ferroviaria di Ljubljana

FLASH INFORMATION

Ljubljana



Parking area:
over 500
parking stall



Bike and kick scooter sharing

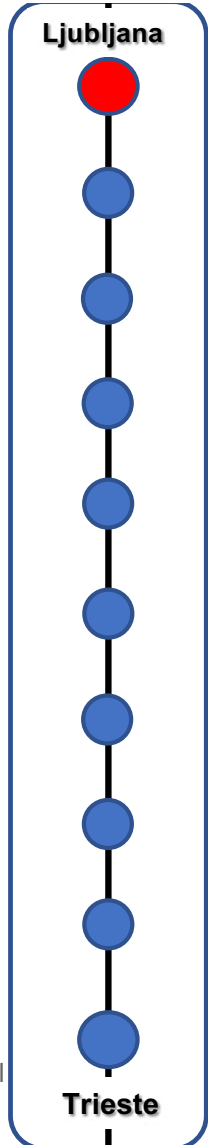


7 Urban bus lines:
02-09-12-12D-25-27-27K



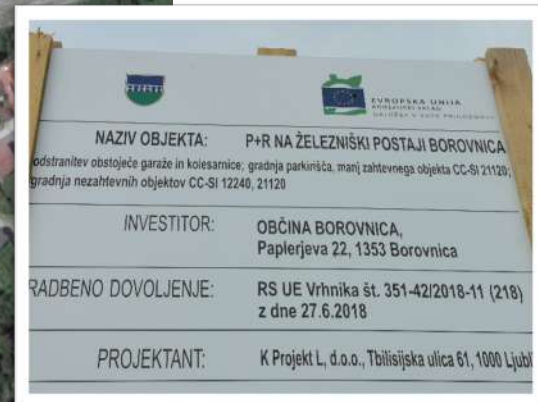
14 National and International
Lines bus

Trieste



Borovnica rail station

FLASH INFORMATION



Ljubljana



Borovnica



Trieste



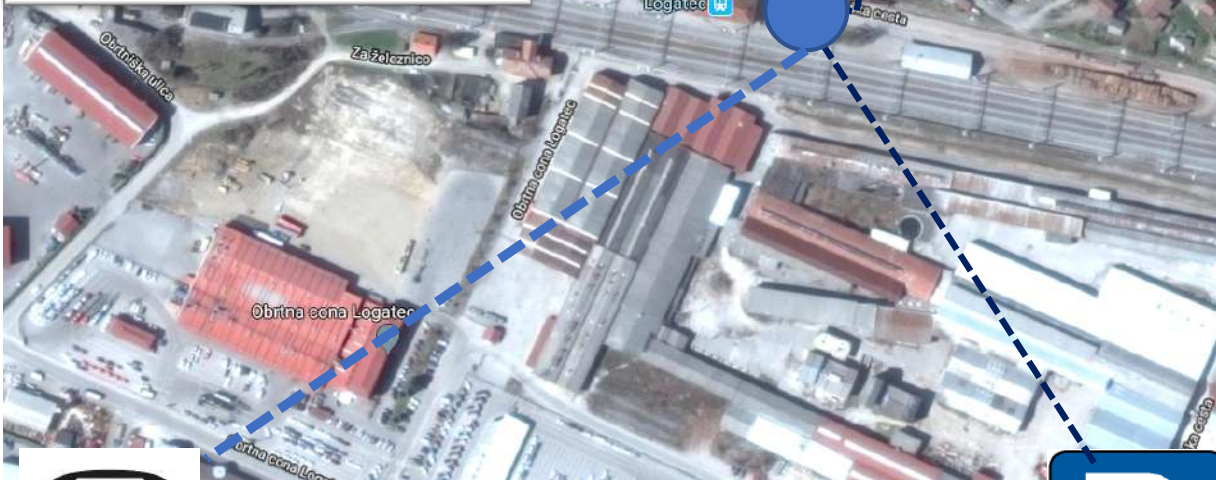
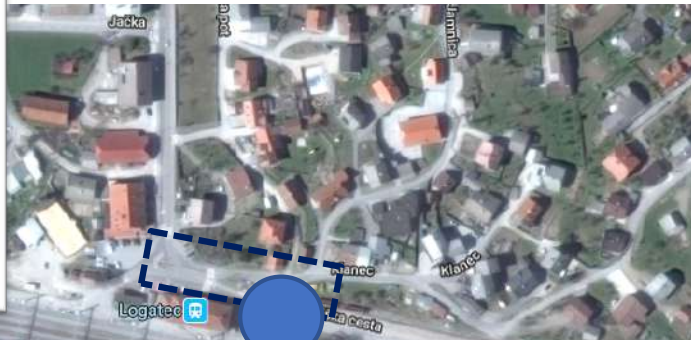
3 extraurban lines



Parking area: over 50 parking stall

Underconstruction area

Logatec rail station



FLASH INFORMATION

Ljubljana



Locatec



Trieste

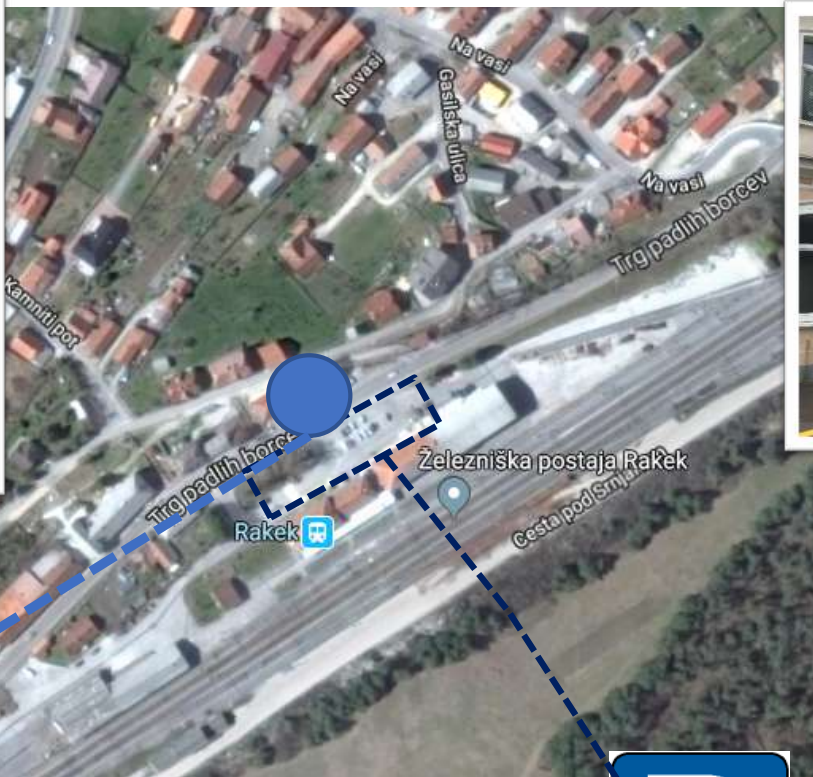


3 extraurban lines

Parking area: over 30 parking stalls



Rakeck rail station



FLASH INFORMATION

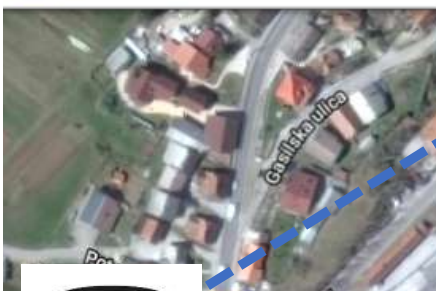
Ljubljana



Rakeck



Trieste



5 extraurban lines

Parking area: over 50 parking stall



Postojna rail station

FLASH INFORMATION

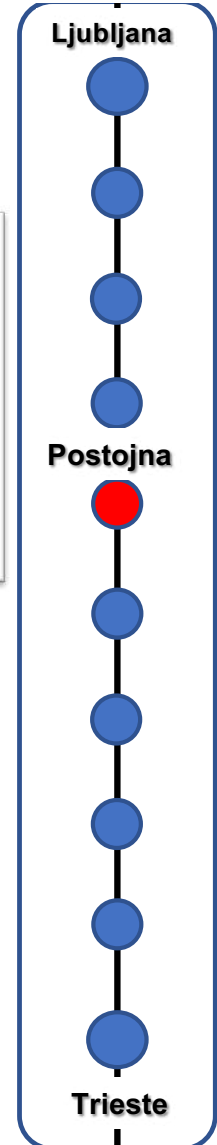


1200 mt

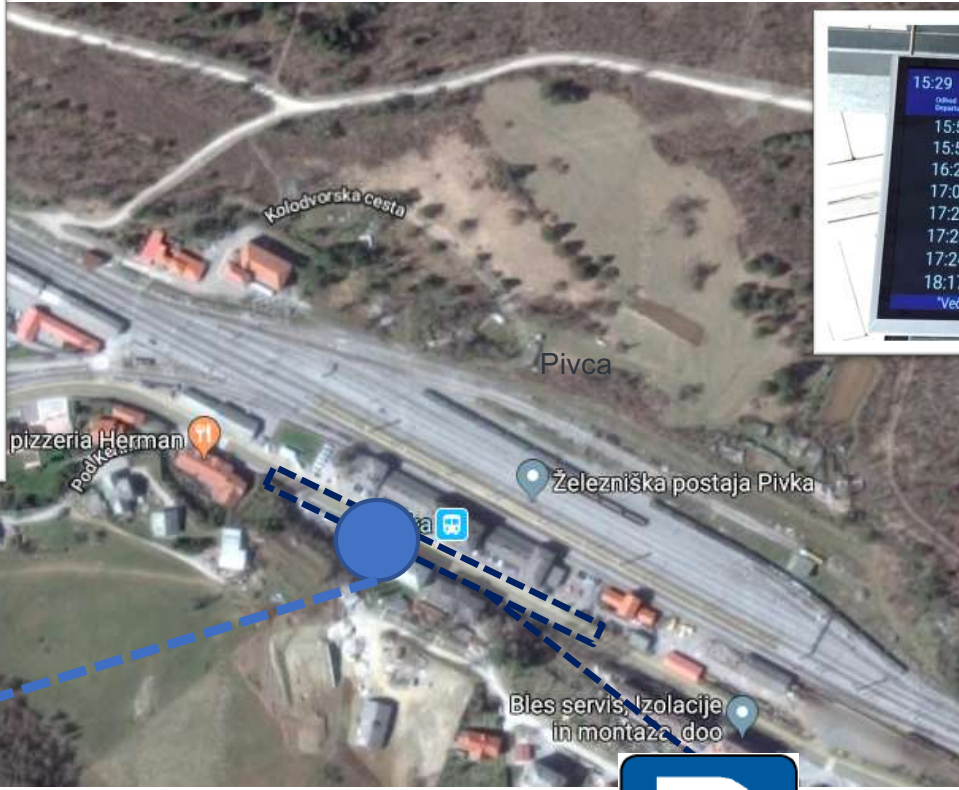
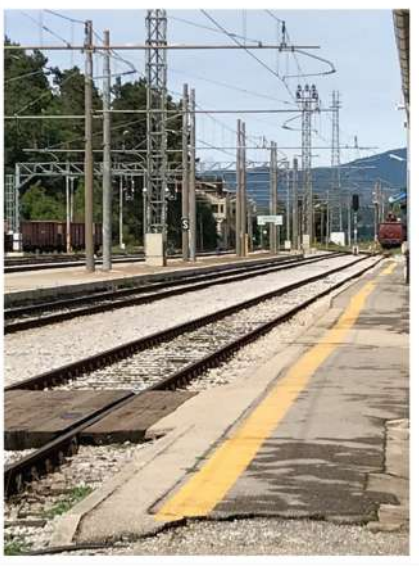


30 extraurban lines

Parking area: over
100 parking stall



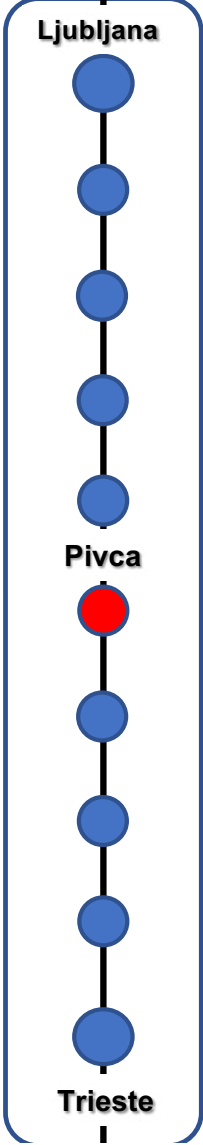
Pivca rail station



FLASH INFORMATION
.....

15:29					
Odhod / Departure	Člani Station	Vozi Type	Številka Number	Trg Track	Časovni Tabela
15:50	Opčine	LPV	1808	2	
15:53	Hodoš	IC	502	3	
16:23	Reka	BUS	483	*	
17:03	Koper	LPV	2756	2	
17:21	Trst	RG	1896	2	
17:23	Ljubljana	LPV	2615	3	
17:24	Ilirska Bistrica	LPV	2709	1	
18:17	Sežana	LP	6360	2	

*Več informacij dobite na tel. št. 080-8111 ali na www.slo-zeleznice.si



3 Extraurban lines

Parking area: over
50 parking stall

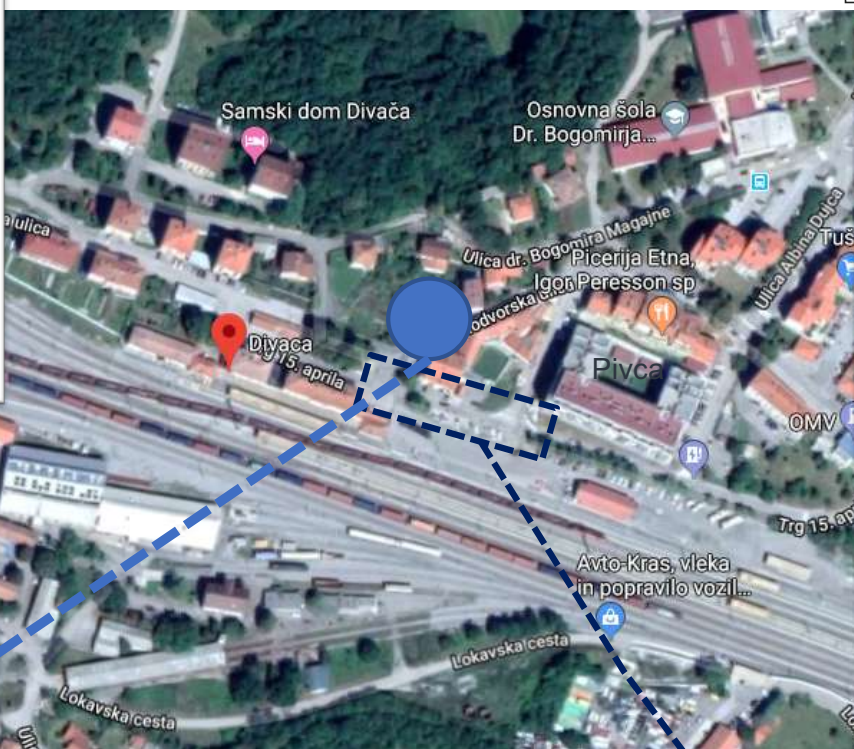


Divača rail station

V evropska mesta že od 8 €

Zagreb	/ 9 €
Opatija, Reka	/ 9 €
Pulj	/ 19 €
Trst	/ 8 €
Letališče Trst	/ 11,60 €
Beograd	/ 29 €
Budimpešta	/ od 15 €
Dunaj	/ od 29 €
München	/ od 29 €
Frankfurt	/ od 49 €
Zürich	/ od 29 €
Praga	/ od 39 €

GOVERNORAT ZALUŽANJE
DIREKCIJA ŽELJEZNIČARSTVA SLOVENIJE

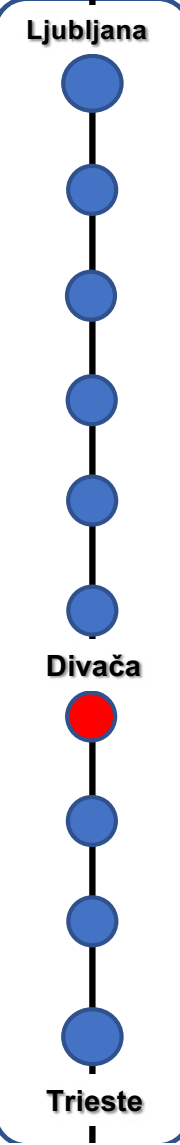


20 Extrarurban lines

Parking area: over 30 parking stall



FLASH INFORMATION



Villa Opicina rail station



Arrivi		Partenze	
6.00	...	19.00	...
7.00	...	20.00	...
9.00	...	21.00	...
10.00
12.00
16.00
18.00

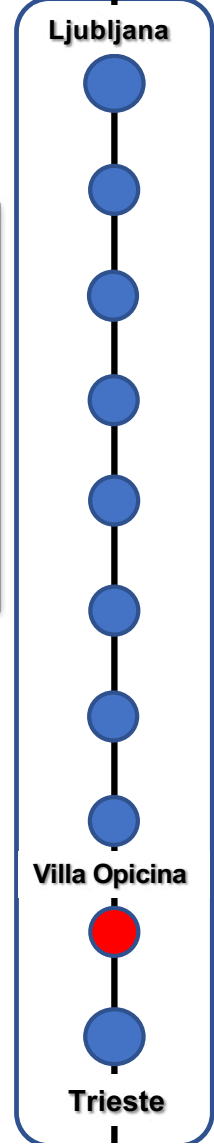


2 Urban lines: 02/, 04

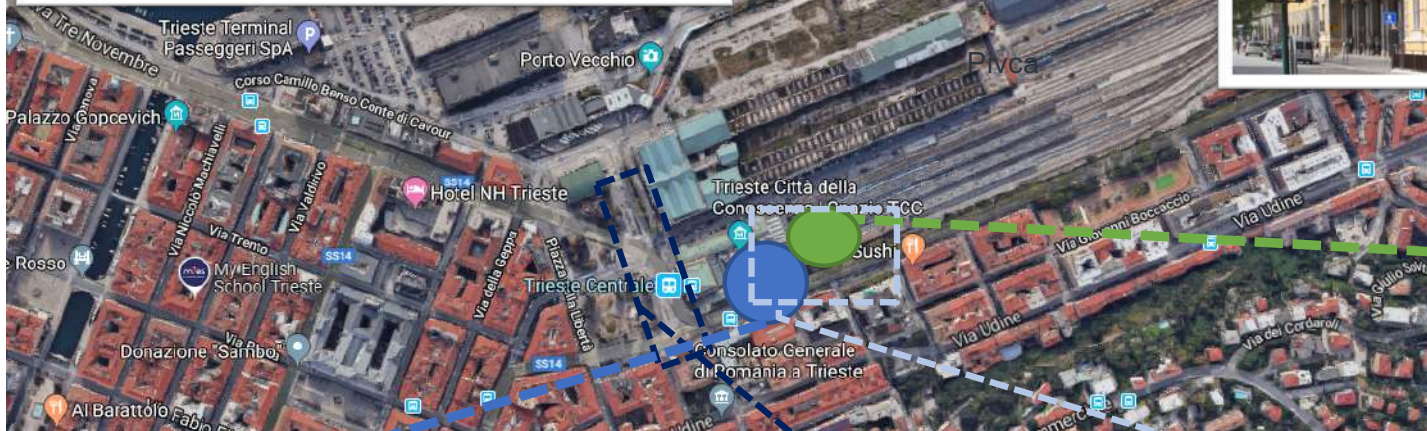
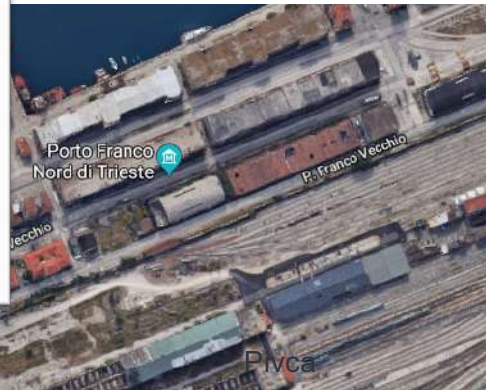
Parking area: over 70 parking stall



FLASH INFORMATION



Trieste rail station



FLASH INFORMATION

Ljubljana



Trieste



Bus station over 20 urban, extraurban and national and international lines

Parking area: over 200 parking stall, free and fee parking



Bike sharing

